

Product description

[What are the most popular microfiber bags?](#)

[How long does it take to produce a pouch?](#)

[How to place an order?](#)

[Click *China ring packaging bag supplier* to know more](#)

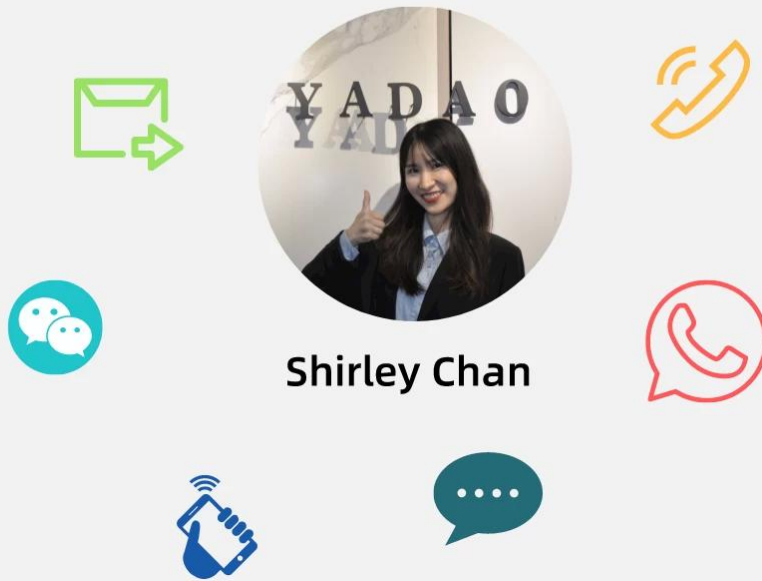
Product Name	drawstring design off white color suede jewelry packaging pouch
Material	Suede
Size	(Can be customized)
Color	off white
MOQ	1000 pcs
Logo	hot stamping
Production Time	Normally 20-25 days (can adjust according to actual situation)
Place of origin	Guangdong, China (mainland)

Product Images



[How to order](#)

Contact



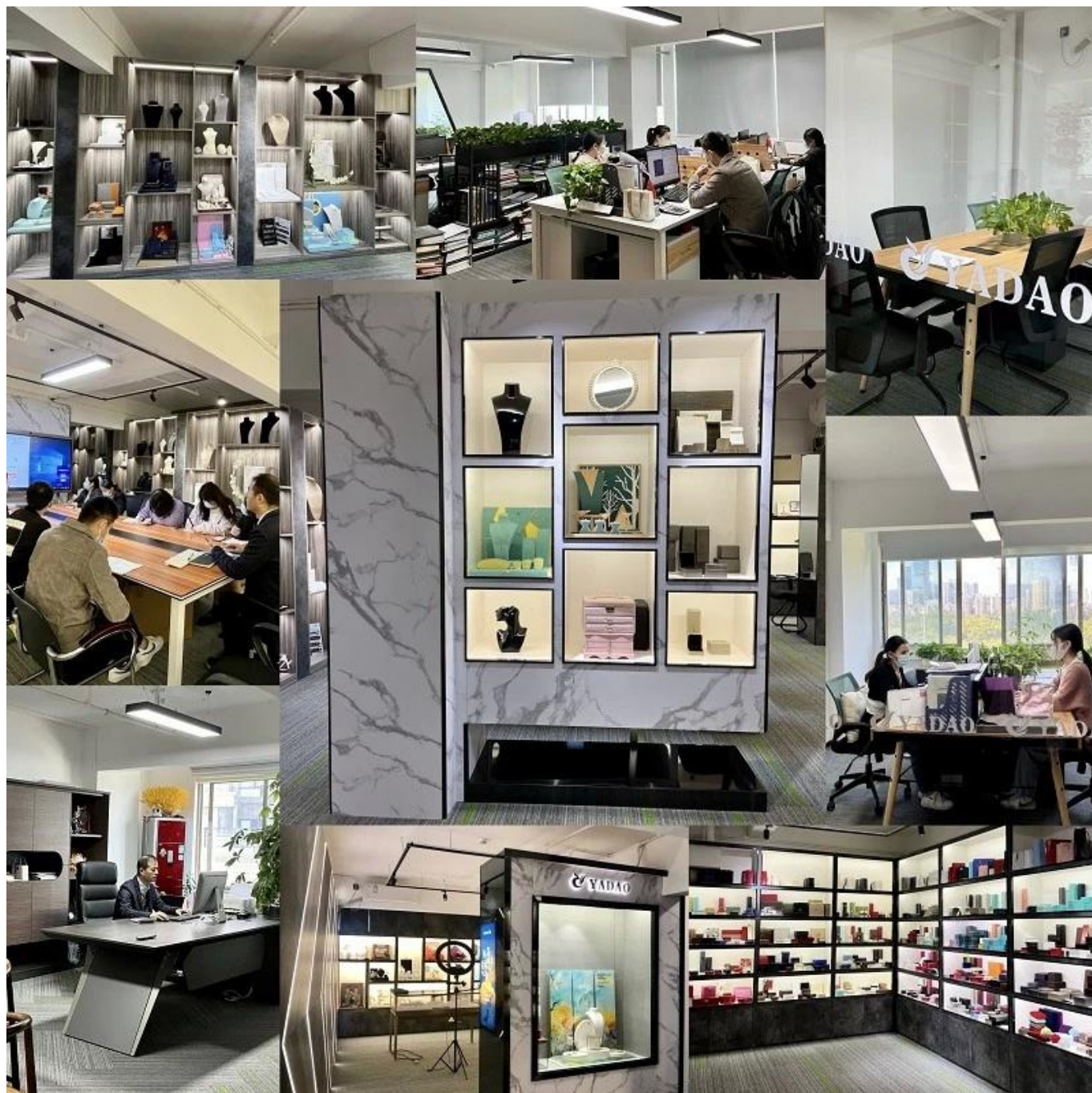
Shirley Chan

[click to talk with shirley directly](#)

Welcome to our office







Exhibition

2023 Hongkong international jewellery exhibition show





See you in SEPT. [HK Jewellery Exhibition]

Evaluation from our Clients



Sun, 10 Jan

Hi ❤️ happy Late new year 🎉
Sorry for the late reply, thanks for your concern, I gave your number to my friends because they ask for the boxes.

And everything is perfect 🙌
Thanks again .

21:37

Hi ❤️
I received the goods in full, it is better than I expected 😊
thank you sooo much ❤️❤️

18:11

Mon, 30 Nov

wow, that's so great 🙌 13:59 ✓

thanks for your loving 13:59 ✓

Mon, 11 Jan

thank you, happy late new year too 😊
I received the message from your friend thanks again ❤️

10:03 ✓

Supplier Service: Very Satisfied (5 stars) On-time Shipment: Very Satisfied (5 stars)



 Make Up Velvet Button New Style Jewelry Pack...

★★★★★

These pouches were amazing. Just the perfect size for my jewellery. I love them. amazing quality, next I order I will have to make them a bit bigger.

hi dear, have you received the pouches?

Hello dear yes I did two days ago at last 15:19

Thank you 🙏 15:19

wow, that's great 🙌

Are they all in well?

Yes they are good
I will probably need to reorder soon 15:22

Sun, 14 Mar

Hello, how are you? Everything was very well, thank you very much. I will tell you when I need more 07:36

🙌🙌🙌🙌🙌🙌🙌 07:36

Please send me a message on the Alibaba website where I can rate their products with 5 stars Thank you very much 07:37

🙌🙌🙌🙌🙌🙌🙌 07:37

Supplier Service: Very Satisfied (5 stars) On-time Shipment: Very Satisfied (5 stars)

 Custom Logo Luxury Envelope Button Drawstri...

★★★★★

The pouches are excellent quality. Nice and thick fabric. Shipping was reasonably quick as well. Will be purchasing again in the future.

Hiiii 15:15

Yes we are selling 15:15

Everyone LOVES the boxes

Feedback from our clients ❤️



Shipment

FAQ

Q1. What is your product range?

1. Pouch by Industry --- Watch Pouch / Jewelry Pouch / Glasses Pouch
2. Pouch by Material --- Velvet / Microfiber / Suede / Linen / Silk / Cotton
3. Pouch by Style --- Drawstring / Button / Zipper / Magnetic / Bow and Ribbon
4. Shopping Bag --- paper bag

Q2. Are you a direct manufacturer?

Yes. Since 2003 we have been specializing in jewelery packaging for over 10 years.

Q3. Do you have items in stock to sell?

No. We customize. This means that all the details --- size, material, color, quantity, design, logo --- will be finished following your ideas.

Q4. Do you inspect the finished products?

Yes. Each phase of production and finished products will be carried out by the quality control department before shipment.

We are always ready to be your loyal driver for jewelry packaging!

Send your request now!

The best solutions and high quality items will be offered. * ^ _ ^ *

Contact:

Foreign sales hotline: +86 0755-25861273 0755-25534056

E-mail: sales@bzshow.net